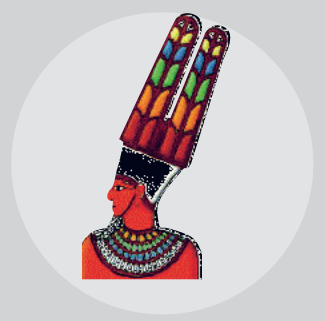


# Atón



## GRUPOS ABIERTOS CON MOTOR DEUTZ OPEN GENSETS - DEUTZ



Manuf. Marca	Grupo Modelo Gen set Model	Potencia Power				Motor Engine	Gov. Reg.	Cyl. Cil.	Cool. Ref.	Asp. Asp.	cm <sup>3</sup>	Consumo Consum. @75% carg. load (g/kWh)		Medidas Dimensions cm l x w x h	Peso Weight		Cuadro El. Control Cub.			
		50 Hz		60 Hz								Man/Ar	Aut.		AMF					
		kVA PRP	kVa LTP	kVA PRP	kVa LTP															
		1500	1800	kg	Lit.											SAM	710/5310	720/5320	720/5320	
DEUTZ	AD-013	13,0	14,5	14,0	16,0	F2L2011	M	2	A	N	1550	240	232	129x62x122	420	32	-	-	-	-
	AD-020	20,0	21,0	22,0	25,0	F3L2011	M	3	A	N	2330	228	226	144x62x110	540	36	-	-	-	-
	AD-030	30,0	32,0	35,0	38,0	F4L2011	M	4	A	N	3110	216	218	165x73x128	620	62	-	-	-	-
	AD-040	40,0	42,0	45,0	50,0	BF4L2011	M	4	A	T	3110	219	214	170x73x124	700	80	-	-	-	-
	AD-060	60,0	61,0	65,0	66,0	F6L914	M	4	A	T	6470	219	214	188x93x143	850	80	-	-	-	-
	AD-021	20,9	21,9	28,0	29,4	F3M2011	M	3	L	N	2330	219	222	140x66x130	540	62	-	-	-	-
	AD-031	30,0	32,0	34,0	38,0	F4M2011	M	4	L	N	3110	219	222	165x73x128	640	62	-	-	-	-
	AD-041	40,0	42,0	45,0	50,0	BF4M2011	M	4	L	T	3110	217	216	170x73x120	700	80	-	-	-	-
	AD-061	60	65	66	74	BF4M2012	M	4	L	T	4040	221	228	188x930x149	1000	198	-	-	-	-
	AD-085	85	92	87	94	BF4M1013E	M	4	L	T	4760	213	215	205x93x143	1100	208	-	-	-	-
	AD-105	105	108	N/A	N/A	BF4M1013EC	M	4	L	T	4760	205	N/A	223x93x162	1320	226	-	-	-	-
	AD-130	130	143	144	144	BF4M1013FC	M	4	L	T	7150	208	213	250x110x250	1460	273	-	-	-	-
	AD-131	130	143	144	144	BF6M1013E	M	6	L	T	7150	208	213	234x102x140	1460	224	-	-	-	-
	AD-150	150	165	N/A	N/A	BF6M1013EC	M	6	L	T	7150	199	N/A	250x103x150	1620	236	-	-	-	-
	AD-200	200	220	N/A	N/A	BF6M1013FCP	E	6	L	T	7150	222	N/A	251x103x152	1740	255	-	-	-	-
	AD-250	250	274	N/A	N/A	TCD2013L06-4V	E	6	L	T	11900	207	218	300x120x250	2200	559	-	-	-	-
	AD-300	300	330	339	374	BF6M1015C	E	6	L	T	11900	202	209	275x140x229	2940	559	-	-	-	-
	AD-380	380	414	388	426	BF6M1015CP	E	6	L	T	11900	208	211	275x140x229	3260	559	-	-	-	-
	AD-430	430	477	459	512	BF8M1015C2	E	8	L	T	15900	204	210	300x146x247	3700	574	-	-	-	-
AD-500	500	550	530	588	BF8M1015CP	E	8	L	T	15900	211	211	300x146x247	3920	574	-	-	-	-	

### Alcance de suministro:

El motor y el alternador se ensamblan creando un monoblock rígido con conexión de ejes por un disco flexible. El monoblock está montado en un chasis de acero mediante tacos antivibratorios. El chasis incorpora un tanque de combustible. El arranque es eléctrico e incluye una batería.

### Scope of supply:

The engine and alternator are assembled together as a rigid monoblock with a flexible disc shaft connection. The monoblock is fitted in a steel baseframe, supported by antivibration mountings. The baseframe includes a fuel tank. The start is electrical and includes a battery.

# Aker



## GRUPOS INSONOROS CON MOTOR DEUTZ SOUNDPROOFED GENSETS - DEUTZ



Manuf. Marca	Grupo Modelo Gen set Model	Potencia Power				Motor Engine	Gov. Reg.	Cyl. Cil.	Cool. Ref.	Asp. Asp.	cm <sup>3</sup>	Consumo Consum. @75% carg. load (g/kWh)		Medidas Dimensions cm l x w x h	Peso Weight		Cuadro El. Control Cub.			
		50 Hz		60 Hz								1500	1800		kg	Lit.	Man/Ar r			
		kVA PRP	kVa LTP	kVA PRP	kVa LTP												SAM	710/5310	Aut. 720/5320	AMF 720/5320
DEUTZ	ID-021	20,9	21,9	28,0	29,4	F3M2011	M	3	L	N	2330	219	222	200x95x127	900	117	-	-	-	-
	ID-031	30,0	32,0	34,0	38,0	F4M2011	M	4	L	N	3110	219	222	200x95x127	980	117	-	-	-	-
	ID-041	40,0	42,0	45,0	50,0	BF4M2011	M	4	L	T	3110	217	216	250x110x145	1200	117	-	-	-	-
	ID-061	60	65	66	74	BF4M2012	M	4	L	T	4040	221	228	250x110x145	1440	117	-	-	-	-
	ID-085	85	92	87	94	BF4M1013E	M	4	L	T	4760	213	215	300x120x1501	1780	220	-	-	-	-
	ID-105	105	108	N/A	N/A	BF4M1013EC	M	4	L	T	4760	205	N/A	300x120x1501	1900	220	-	-	-	-
	ID-130	130	143	144	144	BF4M1013FC	M	4	L	T	7150	208	213	300x120x1501	2120	220	-	-	-	-
	ID-131	130	143	144	144	BF6M1013E	M	6	L	T	7150	208	213	300x120x1501	2120	220	-	-	-	-
	ID-150	150	165	N/A	N/A	BF6M1013EC	M	6	L	T	7150	199	N/A	360x135x206	2700	361	-	-	-	-
	ID-200	200	220	N/A	N/A	BF6M1013FCP	E	6	L	T	7150	222	N/A	360x135x206	3060	361	-	-	-	-
	ID-250	250	274	N/A	N/A	TCD2013L06-4V	E	6	L	T	11900	207	218	360x135x206	2900	361	-	-	-	-
	ID-300	300	330	339	374	BF6M1015C	E	6	L	T	11900	202	209	420x160x204	4340	534	-	-	-	-
	ID-380	380	414	388	426	BF6M1015CP	E	6	L	T	11900	208	211	420x160x204	4640	534	-	-	-	-
	ID-430	430	477	459	512	BF8M1015C2	E	8	L	T	15900	204	210	480x200x245	6290	924	-	-	-	-
	ID-500	500	550	530	588	BF8M1015CP	E	8	L	T	15900	211	211	480x200x245	6380	924	-	-	-	-

### Alcance de suministro:

El motor y el alternador se ensamblan creando un monoblock rígido con conexión de ejes por un disco flexible. El monoblock está montado en una carrocería de chapa de acero mediante tacos antivibratorios. La carrocería está insonorizada e incorpora un tanque de combustible. El arranque es eléctrico e incluye una batería.

### Scope of supply:

The engine and alternator are assembled together as a rigid monoblock with a flexible disc shaft connection. The monoblock is fitted inside a soundproofed canopy, supported by antivibration mountings. The canopy includes a fuel tank. The start is electrical and includes a battery.