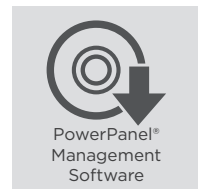
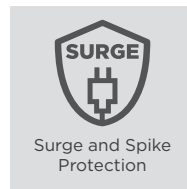
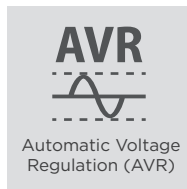
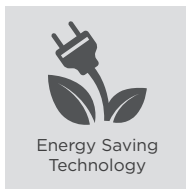
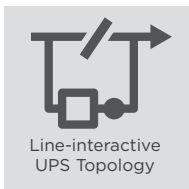


Value500EI/Value600EI/Value700EI
Value800EI/Value1000EI



IEC SOCKETS FOR PROFESSIONAL USAGES



The GreenPower UPS providing reliable power protection with built-in Automatic Voltage Regulation for home and office

Ideal for home, SOHO office, office and back office applications, the Value Series adopts line-interactive topology with Automatic Voltage Regulation (AVR) function to offer stabilized AC power output. This series features IEC sockets for connections with PCs, laptops, and printers, etc. The included RJ11/RJ45 port can provide data line protection against surge and spike. The products' power management software achieves real-time monitoring and configuration.

APPLICATION

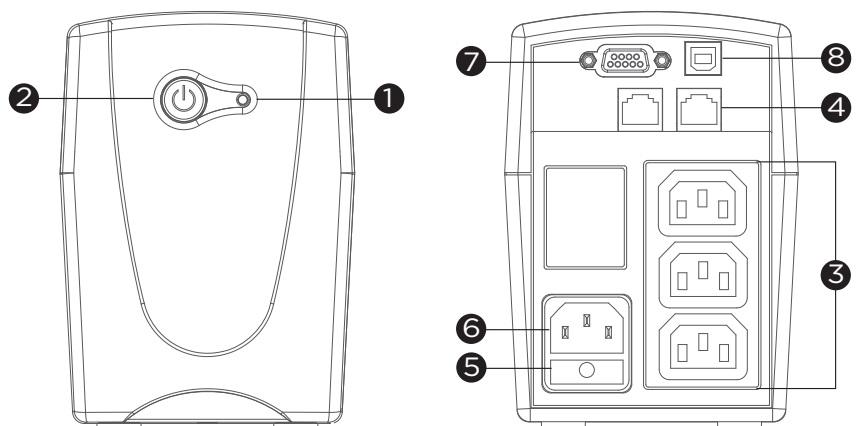
- Home
- Office
- SOHO Office
- Back Office

SERIES FEATURES

- Line-interactive UPS Topology
- Automatic Voltage Regulation (AVR)
- Surge and Spike Protection
- Tower Form Factor
- Energy Saving Technology
- Overload Protection
- Phone/Fax/Modem/DSL/Network Protection
- PowerPanel® Management Software

PRODUCT CALLOUTS

1. Power On Indicator
2. Power On/Off Switch
3. Battery Backup & Surge Protected Outlets
4. Communication Protection RJ11/45
5. Input Fuse
6. AC Inlet
7. Serial Port
8. USB Port



Value500/600/700/800/1000EI



TECHNICAL SPECIFICATIONS

Model Name	Value500EI	Value600EI	Value700EI	Value800EI	Value1000EI
General					
UPS Topology	Line-interactive	Line-interactive	Line-interactive	Line-interactive	Line-interactive
Energy Saving Technology	GreenPower UPS™ Bypass Technology				
Input					
Nominal Input Voltage (Vac)	230 ± 10%	230 ± 10%	230 ± 10%	230 ± 10%	230 ± 10%
Input Voltage Range (Vac)	165 - 280	165 - 280	165 - 280	165 - 280	165 - 280
Input Frequency (Hz)	50 ± 5, 60 ± 5	50 ± 5, 60 ± 5	50 ± 5, 60 ± 5	50 ± 5, 60 ± 5	50 ± 5, 60 ± 5
Input Frequency Detection	Auto-sensing	Auto-sensing	Auto-sensing	Auto-sensing	Auto-sensing
Rated Input Current (A)	2.27	2.72	3.18	3.64	4.55
Input Connector Type	IEC C14	IEC C14	IEC C14	IEC C14	IEC C14
Output					
Capacity (VA)	500	600	700	800	1000
On Battery Waveform	Simulated Sine Wave	Simulated Sine Wave	Simulated Sine Wave	Simulated Sine Wave	Simulated Sine Wave
On Battery Voltage(s) (Vac)	220 ± 10%	230 ± 10%	230 ± 10%	230 ± 10%	230 ± 10%
On Battery Frequency (Hz)	50 ± 1%, 60 ± 1%	50 ± 1%, 60 ± 1%	50 ± 1%, 60 ± 1%	50 ± 1%, 60 ± 1%	60 ± 1%, 50 ± 1%
Automatic Voltage Regulation (AVR)	Single Boost, Single Buck	Single Boost, Single Buck	Single Boost, Single Buck	Single Boost, Single Buck	Single Boost, Single Buck
Overload Protection	Fuse	Fuse	Fuse	Fuse	Fuse
Outlet(s) - Total	3	3	3	3	3
Outlet Type	IEC C13 x 3	IEC C13 x 3	IEC C13 x 3	IEC C13 x 3	IEC C13 x 3
Outlet(s) - Battery & Surge Protected	3	3	3	3	3
Typical Transfer Time (ms)	4	4	4	4	4
Battery					
Typical Recharge Time (Hours)	8	8	8	8	
User-replaceable	No	No	No	No	No
Battery Type	Sealed Lead-acid	Sealed Lead-acid	Sealed Lead-acid	Sealed Lead-acid	Sealed Lead-acid
Surge Protection & Filtering					
Surge Suppression (Joules)	125	125	125	125	125
EMI/RFI Filtration	Yes	Yes	Yes	Yes	Yes
Phone/Network Protection RJ11/RJ45 (Combo)	1-in, 1-out	1-in, 1-out	1-in, 1-out	1-in, 1-out	1-in, 1-out
Management & Communications					
LED Indicators	Power On, Line Mode, Battery Mode, Low Battery, Overload, UPS Fault				
HID Compliant USB Port(s)	1	1	1	1	1
Serial Port	RS232	RS232	RS232	RS232	RS232
Audible Alarms	Battery Mode, Low Battery, Overload, Overcharge			Battery Mode, Low Battery, Overload, Overcharge, UPS Fault	
Power Management Software	PowerPanel® Personal	PowerPanel® Personal	PowerPanel® Personal	PowerPanel® Personal	PowerPanel® Personal
Physical					
Form Factor	Tower	Tower	Tower	Tower	Tower
Physical Size - UPS Module					
Dimensions (WxHxD) (mm.)	100 x 140 x 300	100 x 140 x 300	100 x 140 x 300	100 x 140 x 300	100 x 140 x 300
Weight (kg.)	4	4.6	4.6	5.2	5.5
Environmental					
Operating Temperature (°C)	0 - 40	0 - 40	0 - 40	0 - 40	0 - 40
Operating Relative Humidity (Non-condensing) (%)	0 - 90	0 - 90	0 - 90	0 - 90	0 - 90
Online Thermal Dissipation (BTU/hr)	85	99	99	102	109
Certifications					
Certifications*	CE, C-Tick, EAC	CE, C-Tick, EAC	CE, C-Tick, EAC	CE, C-Tick, EAC	CE, C-Tick, EAC
RoHS	Yes	Yes	Yes	Yes	Yes

*Certifications may vary according to different regions. Visit www.cyberpower.com for more information.
#All specifications are subject to change without notice.